



---

# Project Resourcing

---

**2023**

---

# Overview

- This document provides an overview of the core resources required to implement the rg1 platform
- These personas will, at times, be augmented by additional roles, that are likely to include:
  - QA/testing resources
  - Subject matter experts for specific data sources or technologies utilised by the client.
- Note that all implementations must have a **Lead** (who 'owns' the overall implementation from a technical perspective) and delivery team members (who deliver parts of the overall implementation).

# Core Implementation Team



Annette  
Solution Architect

**Role:** Creates overall technical vision for solution, makes key strategic decisions, technical lead.

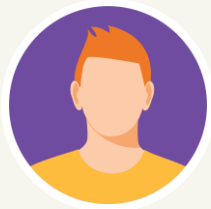
**Skills:** Solution design, ability to understand requirements and match to capabilities



James  
Project Manager

**Role:** Tracks planning, execution and completion of project, manages escalation of issues.

**Skills:** Waterfall/Agile methodologies, project management tools, Excel, task/time management



Markus  
MarTech Expert

**Role:** Initial platform configuration, builds components/campaigns for first use-cases,

**Skills:** Hands-on MarTech skills (ESPs, marketing automation tools, CMS, web integration)



Jonas  
Data Engineer

**Role:** Creates processes to move, cleanse, match and enhance data to support initial use-cases

**Skills:** Customer data, SQL, ETL (Informatica/SSIS etc.), database design, web service integration



kj<sup>®</sup>